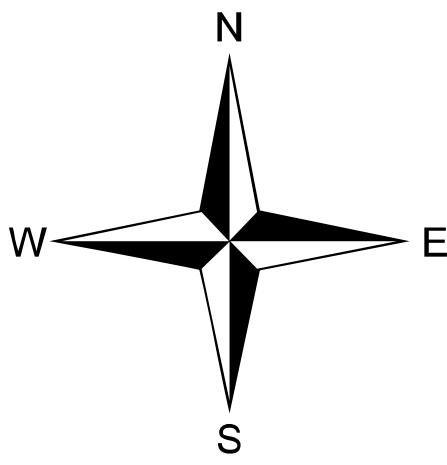
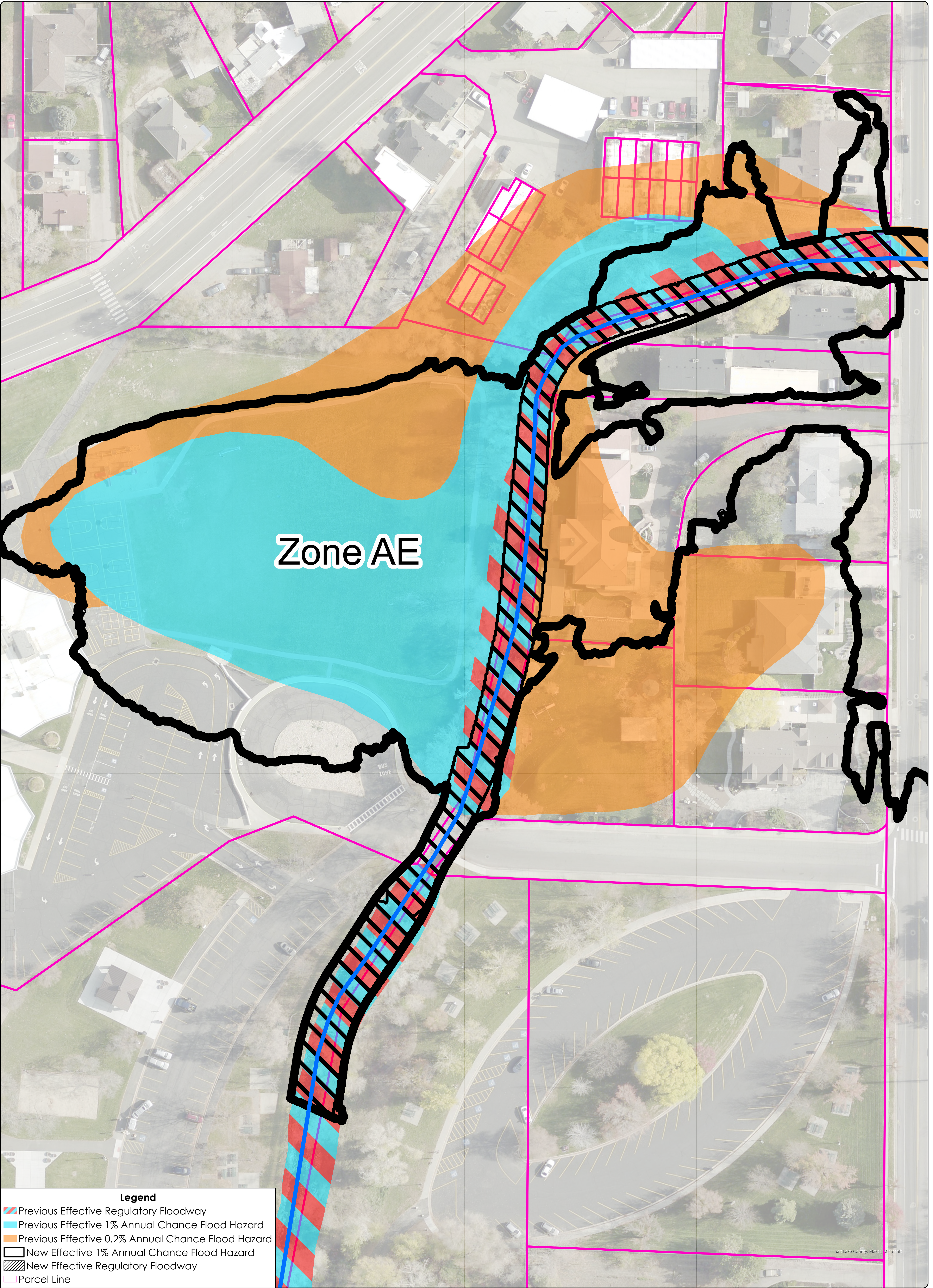


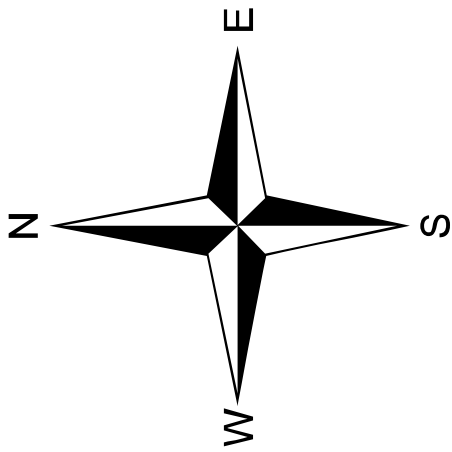
LOMR Results

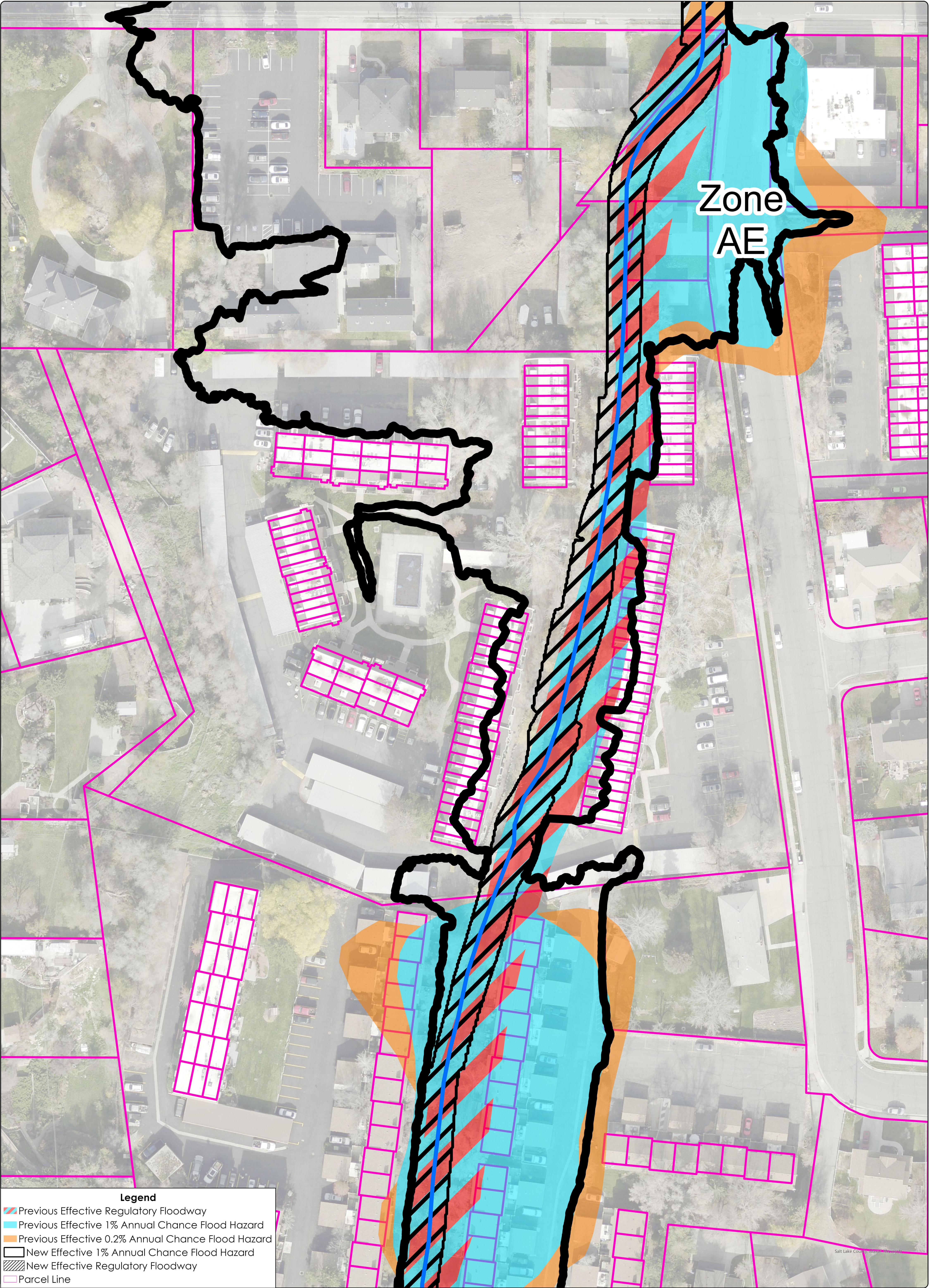
0 0.04 0.07 0.15 MILES





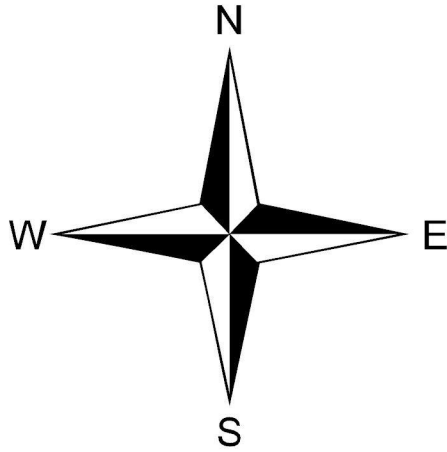
Salt Lake County, Maxar, Microsoft

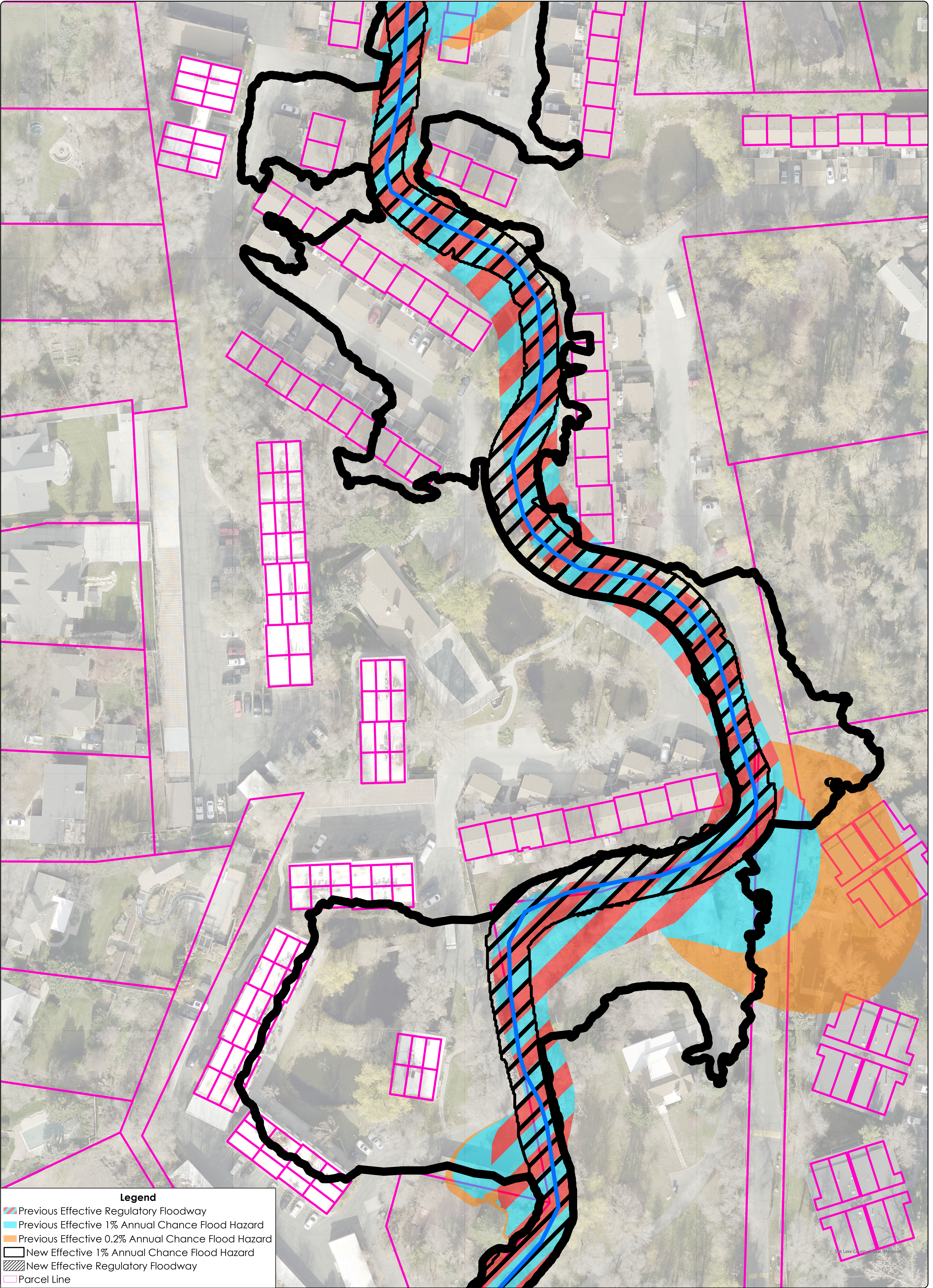










Legend

- Previous Effective Regulatory Floodway
- Previous Effective 1% Annual Chance Flood Hazard
- Previous Effective 0.2% Annual Chance Flood Hazard
- New Effective 1% Annual Chance Flood Hazard
- Parcel Line





Legend

-  Previous Effective Regulatory Floodway
-  Previous Effective 1% Annual Chance Flood Hazard
-  Previous Effective 0.2% Annual Chance Flood Hazard
-  New Effective 1% Annual Chance Flood Hazard
-  New Effective Regulatory Floodway
-  Parcel Line

